

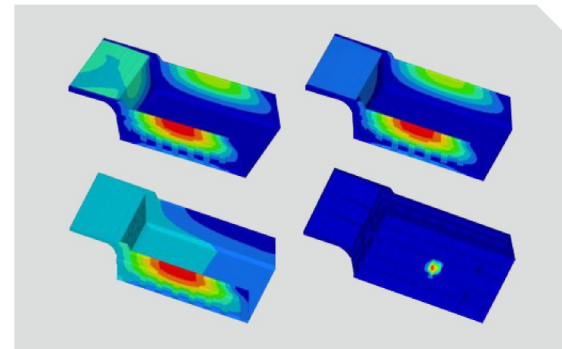
TL855D
off-road dump truck



Add : NO.2339, Fengchan Road, Fengdong New District, Xi'an City, Shaanxi Prov, China
Sales Tel : +86-29-38001214 Service Tel : +86-29-33687710, 4006-863-853
Website : <https://www.tonlyoverseas.com>

Local contact

Components Introduction



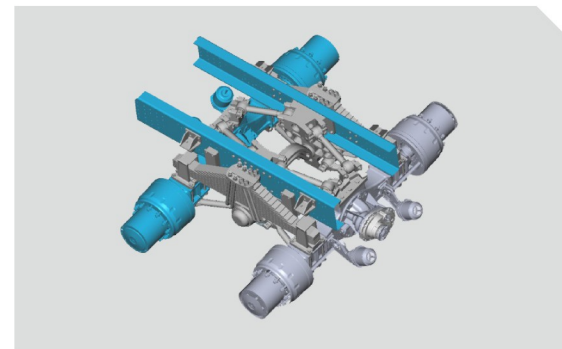
1 Cargo body

Reinforced structure with strong impact resistance.



2 Tire

Special mining tire for mine only with longitudinal and transverse groove design, which provide excellent grip performance and comfort of operation strong carrying capacity and long service life.



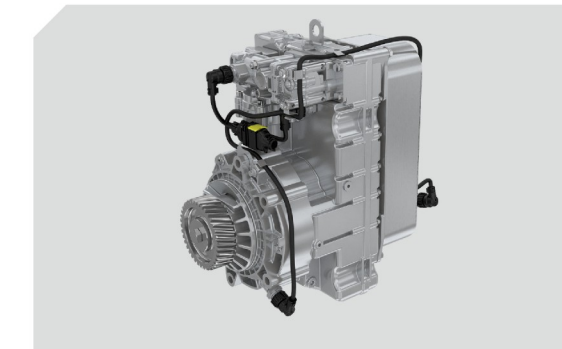
3 Suspension system

The front suspension multi-level shock absorption element to improve driving comfort. The rear leaf spring clamping mechanism with TONLY patent is reliable and practical.



4 Intake system

Three stage combined air filter can improve the efficiency of air filtering, and improve the air clearness.



5 Hydraulic retarder

Transmission combined with hydraulic retarder can reduce the speed of the truck when going down a long slope, works long time and high power, reduce the wear out of braking components and extend the tire life time, ensure the operation safety.



6 FOPS/ROPS certificate

Tonly product is the only one obtained the certificate for big payload through severe test.



7 Steering system

Tonly developed full hydraulic steering system (TONLY owns all patent of this technology), reduce the steering oil temperature, steering operation is lighter, greatly improve the life cycle of the system components, and ensure the truck safety.



8 Anti-collision structure

Anti-collision beam + bumper + through beam structure, effectively protects the driver and the truck.



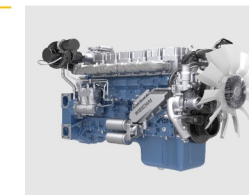
TL855D off-road dump truck

TL855 is a kind of independent innovation product and has become a generation of industry excellence. TL855 has the characteristics of mature technology, stable quality, safety and reliability, and high comprehensive cost performance. With No.1 market share, TL855 has won the "Market Performance Gold Award" in the industry.

Main system characteristics

➤ Engine

- New performance optimization version, high efficient fuel saving.
- 12L large displacement, strong power and wide power coverage.



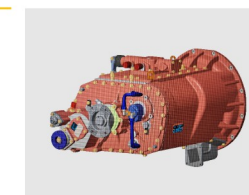
➤ Axle

- TONLY and HANDE jointly design the special axle for mine transportation. Strengthened single casting axle housing, double reduction.
- Big torque, high transmission efficiency and high reliability.



➤ Transmission

- Single box and double intermediate shaft with simple structure, reasonable speed ratio, which is economical and practical.
- Optimize the first shaft and gear to extend the service life.



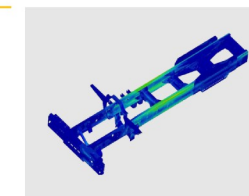
➤ Mining special cab

- Special cab for mining truck with large space, wide visible range and comfortable manipulation.
- Compression molding Interior with lower noise and good quality.



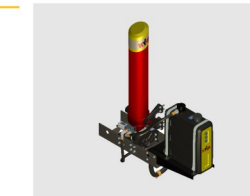
➤ Main chassis frame

- Flexible bolt and rivet connection frame type with high torsional bearing efficiency and long service life.



➤ Lifting system

- Selected mining special oil cylinder system , which has better stability and greater thrust.
- Optimized design of connecting support, strengthened support and improved lifting safety.



Overall parameters	Model	TL855D
	Brand	Tonly
	Drive mode	6×4
	GVW (t)	65
	Rated payload (t)	40
	Kerb weight (t)	25
	Dimensions (mm)	8895×3220×3800
	Wheelbase (mm)	3600+1500
	Wheel track (mm)	2442/2252
	Minimum ground clearance (mm)	350
	Minimum turning radius (m)	10.5
	Maximum height of bucket lift (mm)	7650
	Maximum angle of bucket lift (°)	53
	Loading height (mm)	3500
	Braking distance (m)	12
	Maximum climbing degree (%)	≥36
Maximum speed (km/h)	40	
Engine	Model	WP12G430E310
	Manufacturer / Country	Weichai/China
Transmission	Power (hp/kw)	430/316
	Model	7DS180
	Manufacturer / Country	Fast/China
Axle	Input torque (N·m)	1800
	Manufacturer / Country	Hande/China
Tires / Rims	Load/T	13+25+25
	Tire model	14.00-25
	Rim size	10.0/2.0-25

Container	Base plate material/thickness (mm)	T700/16
	Rear plate material/thickness (mm)	T700/10
	Front plate material/thickness (mm)	T700/10
	Side plate material/thickness (mm)	T700/10
	Container volume (m³)	25
Hydraulic system	Model	FC179
	Manufacturer / Country	HYVA/China
	Steering device	Dual steering
	Lifting time (s)	23
	Discharge time (s)	23
Weight distribution	Empty load	
	Front axle (kg)	10000
	Rear axle (kg)	15000
	Total weight (50% fuel) (kg)	25000
	Loaded	
	Front axle (kg)	15000
Rear axle (kg)	50000	
	Total weight (kg)	65000

