

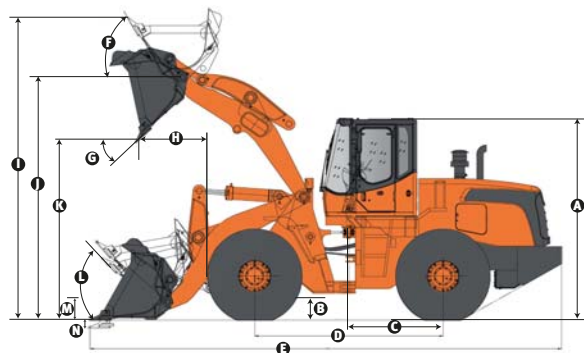
# Specification

Overall working weight	kg	17,300	Front and Rear Axles		
Capacity heaped ISO/SAE	lb	38,140	TYPE		FULLY FLOATING PLANETARY-TYPE HUB DRIVE FIXED MOUNTING(FRONT) TRUNNION MOUNTING(REAR) PLANETARY
	m3	3.0			
	yd3	3.9	Final decelerate type		
Rated load	kg	5000			
Max traction force	Ton	17	Tyre		
Max breakout force (kN)	kN	161	Tyre specification	Mpa	23.5 -25-16PR
	lbf	36,194			
Max gradability	Degree	30	Front tyre pressure	Mpa	0.38
Dump height (at 45 <sup>º</sup> ) 1)	mm	3085	Rear type pressure	Mpa	0.34
(at fully raised)	ft in	10'1"	Steering System		
Dump reach (at 45 <sup>º</sup> ) 1)	mm	1,297	Type	degree	Gear
(at fully raised)	ft in	4'2"			
Overall dimension(LxWxH)	mm	8260 × 2992 × 3450	Steering angle	mm	40
Engine			Min. turning radius (outside tires)	ft in	5800
Model		Doosan DEo8TIS (TIER-II Certified)	Min. turning radius (outside bucket)	mm	19'0"
Type		TURBO, DIRECT INJECTION		ft in	6510
Number of cylinder		6		mm	21'4"
Bore/stroke (mm)		111 X 139 (mm)	Hydraulic system		
Max torque		902 N.m/1300 rpm	System working pressure	bar	170
Rated power		160kW(215HP)/2,000 rpm	Boom lifting(full load)	sec	↔ ~ 6.0
Rated speed		2000 rpm	Total time	sec	↔ ~ 11.3
Min fuel consume ratio		215 g/kw.h @ RATED SPEED	Brake system		
Transmission system			Service brake		AIR PUSH HYDRAULIC SINGLE LINE
Torque converter type		Single Stage, Single phase, Three elements(single turbine)	Parking brake		SPRING-APPLIED AIR RELEASED DRUM BRAKE
Torque ratio		2.142	Fill capacity		
Transmission type		4 SPEEDS, POWER-SHIFT, COUNTERSHAFT	Fuel	liter	330
Gear shift		4 forward shift , 3 back	Hydraulic oil	liter	177
Max speed	km/h	38.0 KPH			

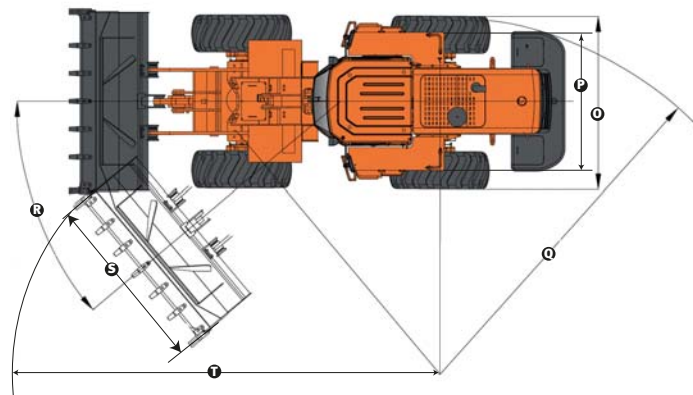
\* Specifications are subject to change without notice for quality improvement.

# Dimension

A. Height to top of cab and canopy	mm	3450	K. Dump height (at 45°) 1)	mm	3085
	ft in	11'3"	(at fully raised)	ft in	10'1"
B. Ground clearance	mm	420	L. Maximum rollback at ground	degree	45
	ft in	1'37"	Max. tilt angle at ground		
C. Machine center point to rear axle		1600	M. Hinge pin height at carry position	mm	500
D. Wheel base	mm	3200	N. Maximum digging depth	mm	120
	ft in	10'6"		ft in	5"
E. Overall length	mm	8260	O. width over tires	mm	2750
	ft in	27'1"		ft in	9'2"
F. MAX. TILT ANGLE (fully raised)	degree	60.5	P. Tread width	mm	2150
G. Bucket dump at full height	degree	49		ft in	7'0"
H. Dump reach (at 45°) 1)	mm	1297	Q. turning radius outside tires	mm	5800
(at fully raised)	ft in	4'2"		ft in	19'0"
I. Maximum overall height	mm	5713	R. Maximum steering angle (each side)	degree	40
J. Hinge pin height at full lift	mm	4150	S. Bucket width	mm	2992
	ft in	13'7"		ft in	9'9"
			T. Turning radius outside bucket	mm	6510
				ft in	21'4"



1) Measured to the tip of the bucket teeth or bolt-on edge.



2) SD310: All measurements with tyres 23.5-25-16PR(L3)

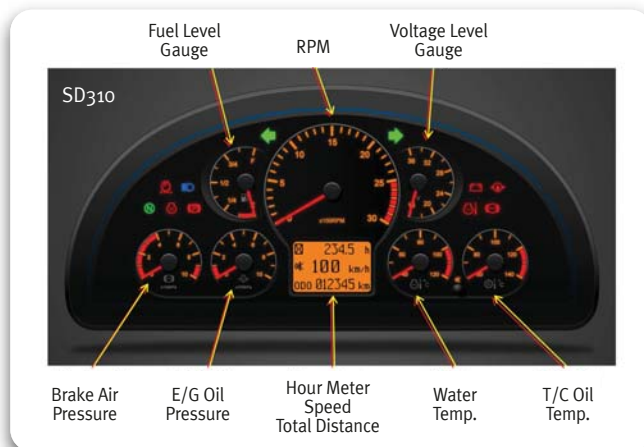
# DISD

# Wheel Loader SD310



No. 1088, Xincheng Street. Muping Economic Developing Zone  
Yantai Shandong 264100 China  
Tel: +86-10-8454-7075 Fax: +86-535-470-7431





**New Operator Panel**  
The instrument panel has been changed to improve operator comfort and convenience.

**Doosan DE08TIS engine ▶**  
Fuel saving and environment friendly low-speed engine, satisfying Tier-II emission standards. Our many years of experience in engine design and production have resulted in the emergence of a highly efficient and very powerful engine that boasts the highest power in its class.



**Rearward Visual Field broadened by 20%**  
The rear end of the device adopts streamline design which largely broadens the rearward visual field of the operator, improving not only the work efficiency but also safety.

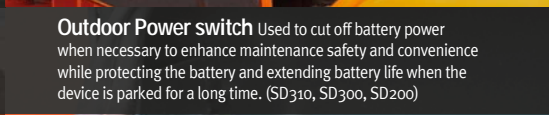
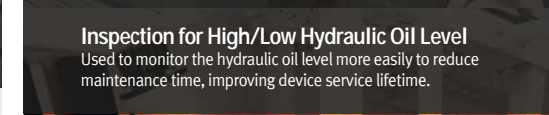
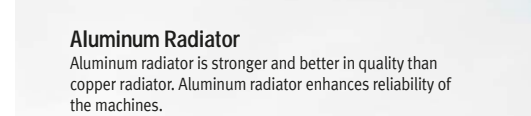
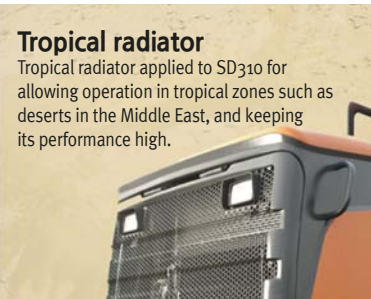
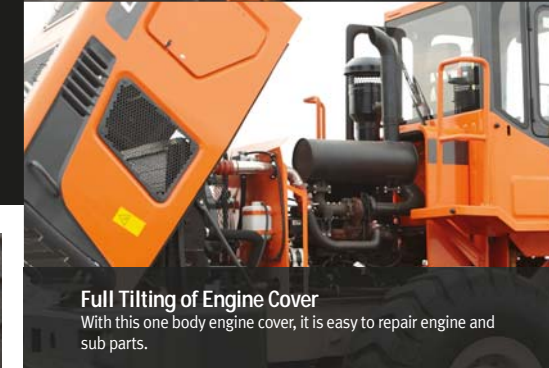


# Excellent Performance for The Best Job

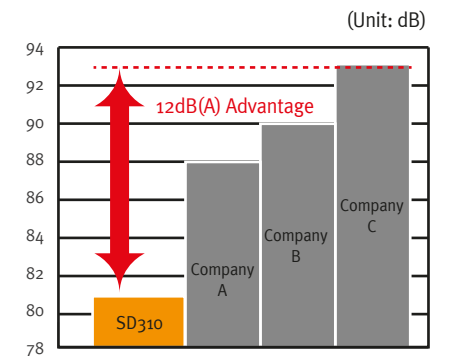
SD310 features powerful performance under poor working conditions with high efficiency and fuel saving operation. Well integrated high quality main components make it possible.



**Fast Operating Speed**  
Significantly improved work progress, reduced work time, and reached excellent perfectly balanced for optimal work efficiency.



**Air Flow Increased by 30%**  
Excellent air-conditioning system and air circulation function as well as perfect defrost system provide operator a more comfortable operating environment and more easy controlling methods to benefit from the above functions.



**Lower Noise**  
Offering a quiet and comfortable working environment and improving efficiency. (SD310 - Indoor noise levels : 81dB, The noise level of the equipment outside : 112dB)



## Features of DISD wheel loader

- Stronger breakout force and tractive force, reflecting excellent performance in a high-load working environment.
- Ideal operating speed and 40°steering angle, sharply improving work efficiency.
- Low-speed engine, saving more fuel for the device.
- Reasonable matched top-end technology, ensuring a more reliable, durable and efficient device.
- Noise reduction technology in line with international standards, providing operator with physical and mental protection, while bolstering work efficiency.
- Industry leading cooling system, offering a guarantee for continuous and uninterrupted work under high temperatures.
- Streamlined appearance and wide operating room, representing an international brand style.

